



West Parade, Worthing



Per Month
£1,295 Per Month

- Seafront Apartment
- Large Double Bedroom
- Lounge / Dining Room
- Resident's Parking
- AVAILABLE FOR NOVEMBER OCCUPATION.
- Stunning Direct Sea Views
- Spacious Modern Bathroom
- EPC Rating - E
- Stock photos from previous marketing
- VIEWINGS 19TH OF OCTOBER BETWEEN 12:00 - 13:30

Robert Luff & Co are delighted to offer to market this beautifully presented third floor apartment with stunning direct sea views ideally situated on Worthing's popular seafront just a stone's throw from the beach and close to the town centre shops, restaurants, parks, schools, bus routes and the mainline station. Accommodation offers entrance hall, a spacious lounge / dining room, kitchen, a large double bedroom with built in wardrobes and a spacious modern bathroom. Other benefits include non allocated resident's parking.

AVAILABLE FOR NOVEMBER OCCUPATION.

T: 01903 331247 E: info@robertluff.co.uk
www.robertluff.co.uk

**Robert
Luff & Co**
Sales | Lettings | Commercial



Accommodation

Communal Entrance

Communal stairs and lifts to third floor, front door to hallway.

Hallway

Herringbone laid wood flooring re-stained to it's former glory, telephone intercom system, dimmer switch, cupboard housing electric meters with hanging space, three storage lockers, airing cupboard with pre-lagged tank and slatted shelving.

Lounge 18'3" x 11'4" (5.57 x 3.47)

Feature herringbone laid flooring, electric heater, TV point with communal sky, coving, double glazed window with direct sea views and far-reaching panoramic views.

Kitchen

A wide range of light fronted wall and base units, one and a half bowl sink unit with mixer tap, Neff double oven, Neff hob and Neff extractor fan over, metro brick tiled splash back and integrated fridge freezer, integrated dishwasher, integrated washing machine, USB power point, service hatch into lounge / diner, double glazed window with direct sea views.

Bedroom One 18'1" x 11'6" (5.51m x 3.51m)

Herringbone laid flooring, electric heater, double wardrobe with hanging space and further single wardrobe with hanging space, storage cupboard and shelving, Jack and Jill door to bathroom, double glazed window with sea views and panoramic views.

Spacious Bathroom

'P' shaped bath with mixer tap, shower screen and Mira shower, wash hand basin with mixer tap set into vanity unit, low level flush W.C, frosted double glazed window, tiled walls and shaver point, heated towel rail.

Tenure

Non Allocated Residents Parking



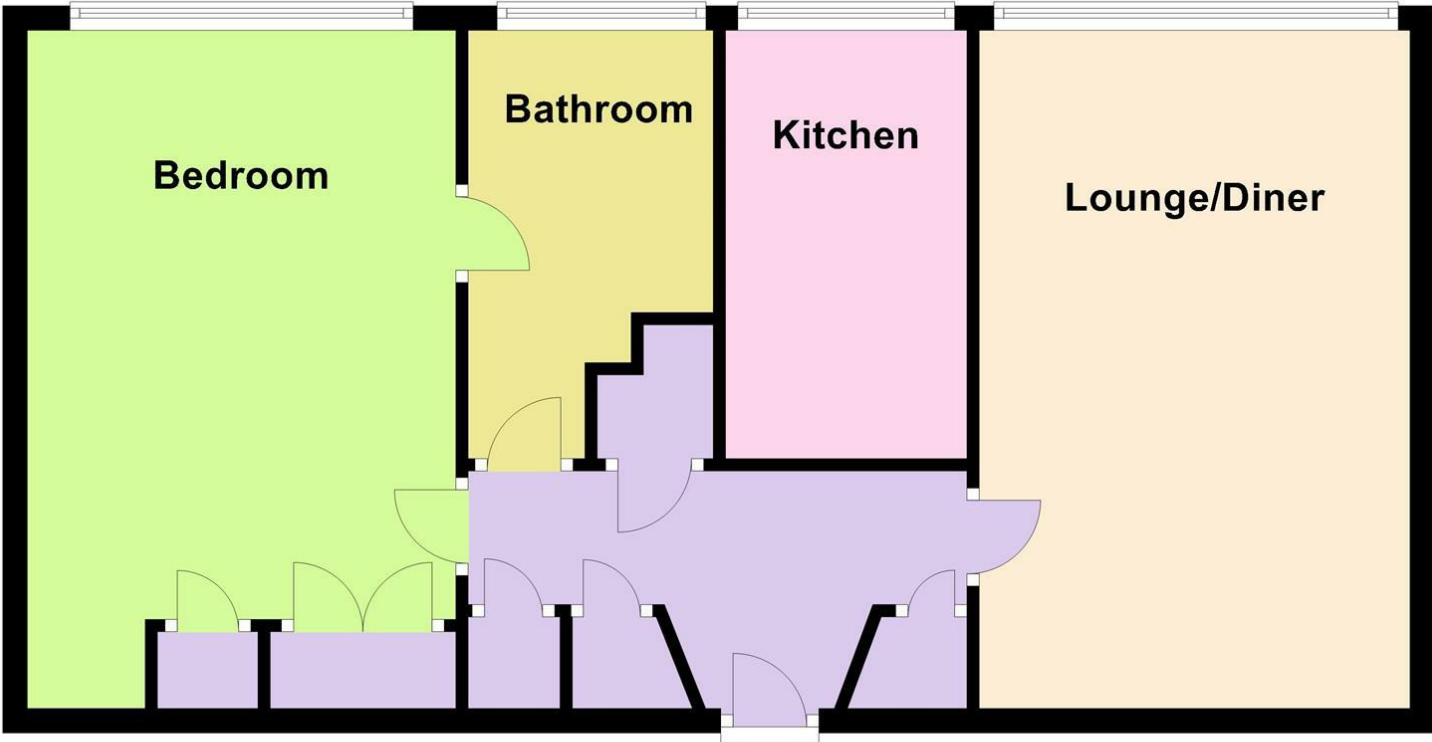
30 Guildbourne Centre, Worthing, West Sussex, BN11 1LZ

T: 01903 331247 E: info@robertluff.co.uk

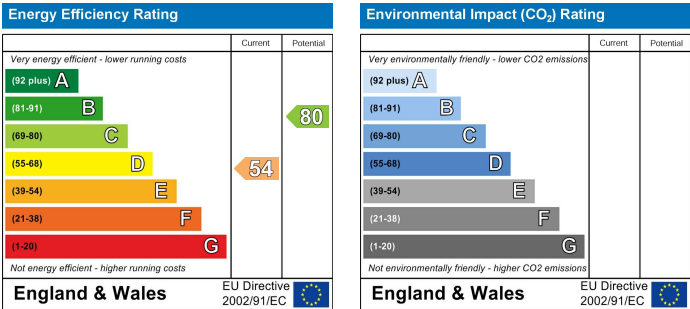
www.robertluff.co.uk

Floor Plan

Approx. 62.4 sq. metres (672.0 sq. feet)



Total area: approx. 62.4 sq. metres (672.0 sq. feet)



The information provided about this property does not constitute or form any part of an offer or contract, nor may it be regarded as representations. All interested parties must verify accuracy and your solicitor must verify tenure/lease information, fixtures and fittings and, where the property has been extended/converted, planning/building regulation consents. All dimensions are approximate and quoted for guidance only as are floor plans which are not to scale and their accuracy cannot be confirmed. References to appliances and/or services does not imply that they are necessarily in working order or fit for the purpose.